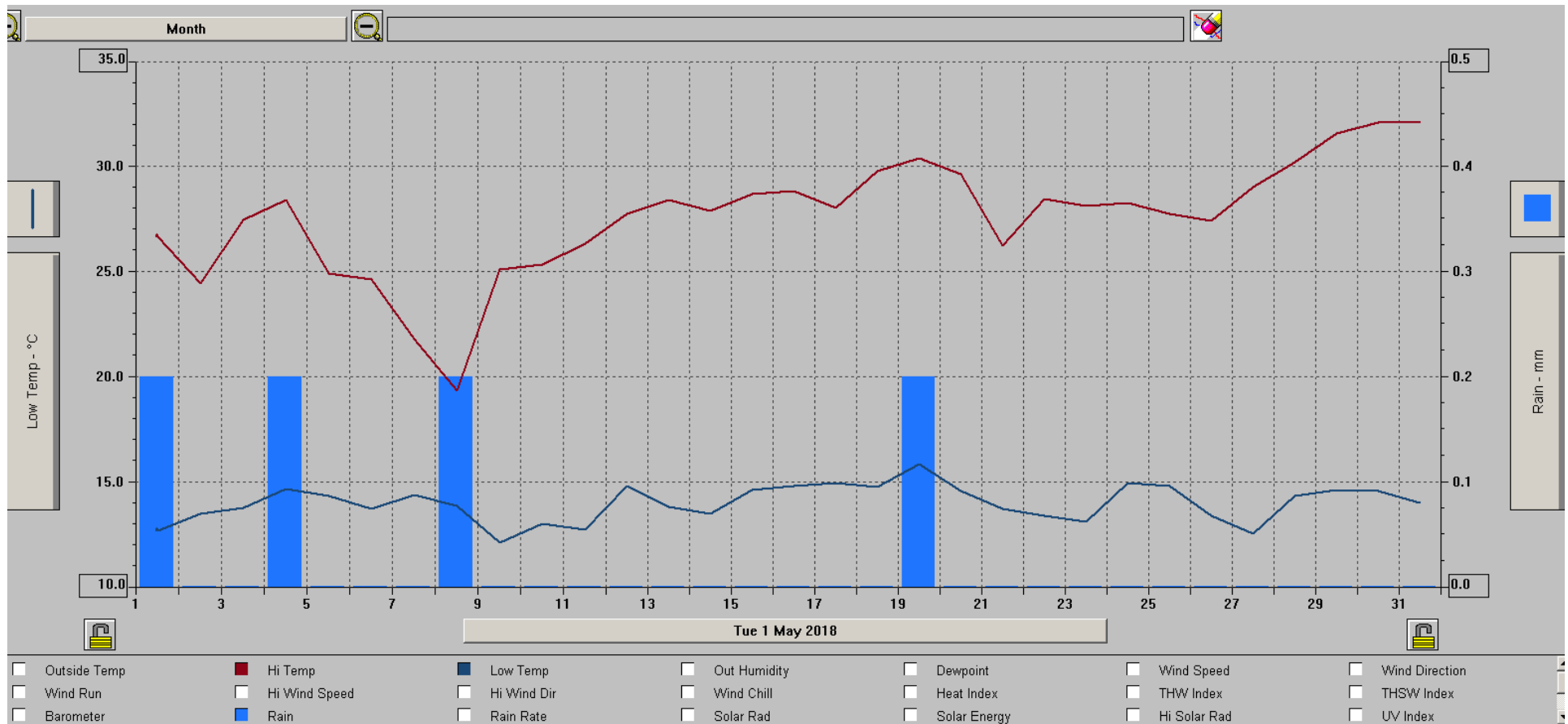


Boletín Meteorológico. Mayo del 2018



Escuela Nacional Preparatoria plantel 6 *Antonio Caso*

Climograma correspondiente al mes de mayo del 2018



La máxima temperatura (32.1°C) se registró durante el último día del mes.

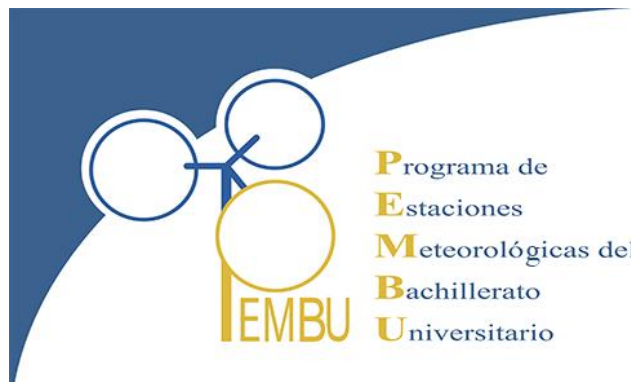
La lluvia acumulada fue de 0.8 milímetros a lo largo de todo este periodo, concentrándose la mayor parte de las precipitaciones durante la primer mitad del mes.

MONTHLY CLIMATOLOGICAL SUMMARY for MAY, 2018

NAME: ENP6 CITY: STATE:
 ELEV: 0 m LAT: 19° 21' 08" N LONG: 99° 09' 24" W

TEMPERATURE (°C), RAIN (mm), WIND SPEED (m/s)

DAY	MEAN		TIME	LOW	TIME	HEAT	COOL	RAIN	AVG		TIME	DOM
	TEMP	HIGH				DEG	DEG		WIND	SPEED		DIR
1	18.7	26.7	1:00p	12.7	6:30a	1.8	2.2	0.2	0.9	8.9	3:30p	NE
2	18.8	24.4	3:00p	13.5	6:30a	1.4	1.9	0.0	0.4	7.2	4:00p	SE
3	19.7	27.4	2:00p	13.8	6:00a	1.1	2.4	0.0	0.9	9.4	12:30a	SSW
4	19.3	28.4	2:30p	14.7	6:00a	1.5	2.5	0.2	0.7	8.9	7:00p	SSW
5	18.2	24.9	3:30p	14.3	2:30a	1.4	1.4	0.0	1.2	9.4	8:00p	NE
6	17.5	24.6	4:00p	13.7	9:30a	1.9	1.1	0.0	1.7	9.4	6:30p	N
7	17.1	21.8	3:00p	14.4	5:30a	1.8	0.6	0.0	1.1	8.0	8:30p	NNE
8	15.6	19.3	12:30p	13.9	8:00p	2.8	0.1	0.2	0.6	7.6	2:00p	N
9	18.1	25.1	4:30p	12.1	6:30a	2.1	1.7	0.0	1.0	8.5	7:00p	NE
10	18.3	25.3	2:00p	13.0	6:30a	1.7	1.6	0.0	0.8	8.9	7:30p	NNE
11	19.2	26.3	4:00p	12.7	6:00a	1.6	2.4	0.0	0.8	7.6	11:00p	SE
12	19.7	27.7	3:30p	14.8	6:30a	1.3	2.7	0.0	0.6	7.2	7:00p	W
13	20.6	28.4	4:30p	13.8	6:30a	1.2	3.4	0.0	0.4	6.7	2:30p	SSE
14	21.1	27.9	4:00p	13.5	6:30a	0.8	3.6	0.0	0.9	8.0	3:30p	NNW
15	21.4	28.7	4:30p	14.6	6:30a	0.6	3.7	0.0	1.5	8.9	6:30p	ENE
16	21.6	28.8	4:30p	14.8	6:30a	0.6	3.8	0.0	1.4	9.4	4:30p	ENE
17	21.6	28.0	5:00p	14.9	6:30a	0.6	3.8	0.0	1.5	10.3	5:00p	ENE
18	22.4	29.8	4:30p	14.8	6:30a	0.6	4.6	0.0	0.8	10.3	4:00p	ENE
19	21.3	30.4	3:00p	15.8	12:00m	0.6	3.5	0.2	0.7	13.0	5:00p	S
20	20.3	29.6	3:00p	14.6	6:30a	1.2	3.2	0.0	0.8	11.2	8:00p	SSE
21	19.1	26.2	2:00p	13.7	6:00a	1.3	2.0	0.0	0.7	11.6	4:00p	W
22	19.4	28.4	4:30p	13.4	6:30a	1.7	2.7	0.0	0.8	14.8	6:30p	W
23	20.4	28.1	4:00p	13.1	6:00a	1.4	3.5	0.0	0.7	8.9	4:30p	SSW
24	21.4	28.3	4:00p	14.9	6:30a	0.7	3.8	0.0	1.4	10.3	5:00p	NE
25	21.1	27.7	3:30p	14.8	6:30a	0.6	3.3	0.0	1.8	11.6	4:00p	N
26	20.8	27.4	4:30p	13.4	7:00a	0.9	3.4	0.0	1.4	8.9	2:30p	NNE
27	21.4	29.0	4:00p	12.6	7:00a	1.0	4.2	0.0	1.2	8.5	2:30p	NE
28	22.7	30.2	3:00p	14.3	6:30a	0.7	5.1	0.0	1.5	11.6	5:00p	ENE
29	23.6	31.6	2:30p	14.6	6:00a	0.6	5.8	0.0	1.4	9.4	4:00p	ENE
30	23.9	32.1	3:00p	14.6	6:00a	0.5	6.1	0.0	1.4	12.1	3:00p	ENE
31	23.8	32.1	2:30p	14.0	6:30a	0.6	6.1	0.0	1.8	13.4	4:00p	NE



Dr. Enrique Graue Wiechers
Rector de la Universidad Nacional Autónoma de México

Mtra. Alma Angélica Martínez Pérez
Directora del plantel Antonio Caso de la ENP

Mtra. Graciela Maya Sixtos
Enlace Institucional del PEMBU/ENP

M en C. Enrique Azpra Romero
Coordinador Técnico del PEMBU

Geog. Illie López Cisneros
Responsable de la estación meteorológica del plantel Antonio Caso de la ENP.

Contacto: illie.lopez@enp.unam.mx

Corina 3, Colonia del Carmen, Delegación Coyoacán, Ciudad de México.
Latitud 19°20'54" Norte; Longitud 99°9'22" Oeste; Altitud 2,247 msnm.